

2. STATES OF MATTER. PHASE CHANGES

2.1 Write the correct phase change.

A puddle on the street dries in a few hours. _____

When water is heated up to 100 °C, it turns into steam. _____

The water in a fridge becomes ice. _____

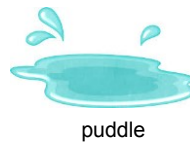
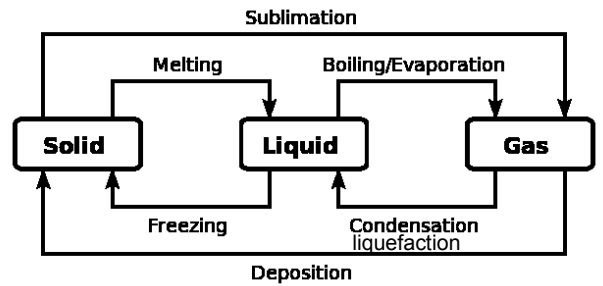
In very cold mornings the cars are covered with frost. _____

The butane gas inside a gas cylinder is under pressure. _____

The fog is produced in cool mornings. _____

If wax is heated up, it turns into a liquid easily. _____

Iodine is a solid which turns directly from solid to gas. _____



puddle



wax



fog



iodine



frost



steam

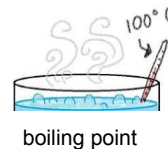
2.2. Complete these sentences:

At _____, a liquid turns into solid.

If we want a liquid to become gas quickly, we have to heat it up to _____

2 litres of water and 1 litre of water will boil at _____ temperature.

Each substance has its own _____ and _____.



boiling point



melting point